



# Intuitively Designed.



SUBTLE  
STYLE,  
SERIOUS  
SOUND!

Micra 6

## THE NEW Micra 6 SYSTEM FROM athena TECHNOLOGIES®.

Introducing the amazing new Micra system from athena TECHNOLOGIES®. A complete 6 piece music and home theater system that is designed to complement your lifestyle, while providing sound quality second to none. This seriously designed system has four identical MS satellites with long throw woofers and a high powered tweeter. Each speaker includes a flexible bracket allowing wall and ceiling mounting. The matching MC center channel is timbre matched for the best possible home theater sound. Completing the system is the M225 8" active subwoofer. Designed exclusively for the Micra system, this unique subwoofer will take little floor space while providing huge amounts of clean, distortion free bass response.

The Micra system is the perfect addition to any home theater system using Plasma or LCD type screens as the slim profile and high tech silver finish match most new flat screens. The versatile mounting brackets provide a simple, strong solution to any type of system installation and allow for angled horizontal adjustment to point the speakers towards the listening area.

Simple to set up, flexible mounting options and athena's legendary sound quality is now more affordable than ever. Audition the Micra system at your local athena TECHNOLOGIES® retailer today!

## PRODUCT SPECIFICATIONS



### MS SATELLITE SPEAKER

#### Specifications

- Frequency Response: 100Hz-20KHz +/-3 dB
- Recommended Amplifier Power: 20 - 100 watts
- Room Efficiency: 89dB
- Cross-Over Point: 2.8kHz
- Impedance: 8 Ohms Compatible

#### Components

- Tweeter: 1/2" (13mm) Textile Dome
- Woofer: 3-1/2" (9 cm) High Performance Injection Molded Polypropylene Cone w/ rubber surrounds
- Magnetically shielded



### MC Center Channel

#### Specifications

- Frequency Response: 100Hz-20KHz +/-3 dB
- Recommended Amplifier Power: 20 - 100 watts
- Room Efficiency: 89dB
- Cross-Over Point: 2.8kHz
- Impedance: 8 Ohms Compatible

#### Components

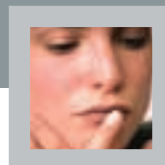
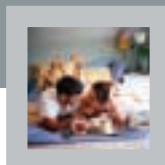
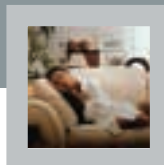
- Tweeter: 1/2" (13mm) Textile Dome
- Woofer: Dual 3-1/2" (9 cm) High Performance Injection Molded Polypropylene Cones w/ rubber surrounds
- Magnetically shielded



### M225 Powered Subwoofer

#### Specifications

- Down Firing, Front Vented Bass Reflex Active Subwoofer
- Frequency Response: (+/-3dB) 30-120Hz
- MOSFET power amplifier – 225 watts – 75 Watts RMS
- Woofer: 8" High Excursion Injection Molded Poly cone
- Front Control for simple level adjustment
- Crossover system pre tuned to perfectly blend with the MS satellite speaker
- RCA and High Level inputs for flexibility with virtually any audio video receiver



### FOR DEALER INQUIRIES

**North America** | API 3641 McNicoll Avenue, Toronto, Ontario, Canada M1X 1G5 • Tel: 416.321.1800

**Australia** | Audio Products Pty Ltd, Unit 6,61-67 O'Riordan S, Alexandria, Australia 2015 • Tel+612 966 93477

**Europe** | API Europe BV Poppenbouwing 56, Geldermalsen, Netherlands, 4191 Nz • Tel: +31345588080

**United Kingdom** | API UK Ltd, Amorex Centre, Bury Road, Lavenham, Sudbury, Suffolk, England CO10 9QD • Tel: +441787249656

Defining Sound | [www.athenaspeakers.com](http://www.athenaspeakers.com)

PRINTED IN CANADA 3PAB011E