



Micra 6

Performance Enhanced.



SUBTLE
STYLE,
SERIOUS
SOUND!

Micra 6



"All that sound was coming from those lil' suckers? ... Athena really has upped the ante with the Micra. It sounds good, looks good, and it works straight out of the box."

Simply irresistible.

...Wes Phillips
On Home Theater

Intuitively Designed.

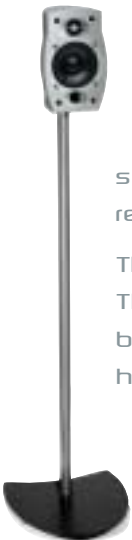


THE NEW Micra 6 SYSTEM FROM **athena** TECHNOLOGIES®.

Introducing the amazing new Micra system from **athena** TECHNOLOGIES®. A complete 6 piece music and home theater system that is designed to complement your lifestyle, while providing sound quality that will amaze you. This meticulously designed system has four identical MS satellites with long throw woofers and a high powered tweeter. Each speaker includes a flexible bracket for easy wall and ceiling mounting. The MC center channel is timbre matched for perfectly balanced home theater sound. Completing the system is the M225 8" active subwoofer. Designed exclusively for the Micra system, this unique subwoofer will take little floor space while providing huge amounts of clean, distortion free bass response all the way down to 30Hz.

The Micra system is the perfect addition to any home theater system using Plasma or LCD type screens. The slim profile and high tech silver finish beautifully match most new flat screens. The versatile mounting brackets provide a simple, yet solid solution for any type of system installation and allow for angled horizontal adjustment to point the speakers towards your listening area.

Simple set up, flexible mounting options and **athena's** legendary sound quality are now more affordable than ever. Audition the Micra system at your local **athena** TECHNOLOGIES® retailer today!

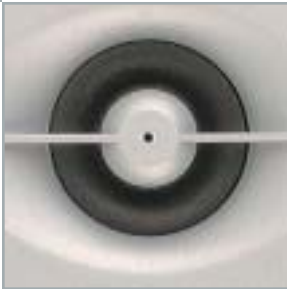
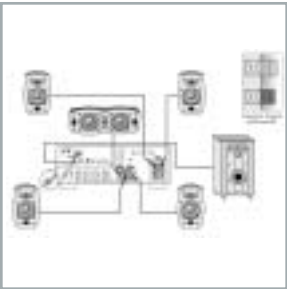


MICRA TECHNOLOGY

The Micra 6 system utilizes much of the innovative design and technology that **athena TECHNOLOGIES®** features in our award winning SCT and Audition Series. Micra 6 components were custom engineered and manufactured to ensure high performance, long life and great sound!

Simple Connections and Set Up

The **athena TECHNOLOGIES®** Micra 6 system is designed to be simple to connect and operate. The operating range of all five speakers and the M225 subwoofer were engineered to function perfectly as a system. Much of the confusion typically involved in setting up a multi channel system has been eliminated.



High Tech Tweeter

The tweeter features a textile dome in a 1/2" format, for clear and accurate high frequencies all the way up to 20kHz without the distortion of typical designs.



High Power Woofer

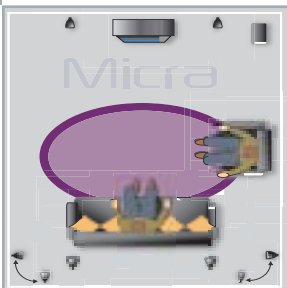
The woofer is a 3-1/2" long throw design, with a large 9 ounce magnet structure - unheard of in this size of speaker. Housed in a vented enclosure, the result is deeper bass response and improved power handling, allowing the power and authority of your music and home theater presentations to come alive!



SCT System

Setting up and getting good sound from most subwoofer-satellite systems can be tricky. The Micra 6 includes the exclusive and patented athena SCT System (System Creation Technology).

The M225 subwoofer features a proprietary crossover network that "blends" the output of the subwoofer to perfectly match the output of the speakers. All of the guesswork of selecting the correct "crossover frequency" is removed by pre-engineering the optimum frequency setting at the factory.



Can I place these speakers where I want to?

The MS and MC speakers also come with a durable metal mounting bracket that mounts to your wall easily, securely, and allows for adjustments of the speakers position and angle. The MS and MC speakers are also Magnetically Shielded for trouble free use near your video display.



PRODUCT SPECIFICATIONS



MICRA 6 -

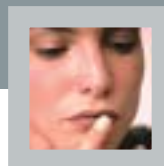
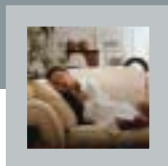
MS SATELLITE SPEAKER MC CENTER CHANNEL

System Type:	Magnetically Shielded
Frequency Response:	100Hz-20kHz, +/- 3dB
Tweeter:	1/2" (13mm) Textile Dome
Woofer:	3 1/2" (9cm) High Performance Injection Molded Polypropylene Cone with rubber surrounds
Power Handling:	100 Watts
Crossover Points:	2.8kHz
Room Efficiency:	89dB
Impedance:	8-ohms compatible
Recommended Amplifier Power:	20 to 100-Watts RMS/Channel
Dimensions: (HxWxD)	MS Satellite inches: 7 x 4.48 x 4.5 cm: 17.8 x 11.4 x 11.5
(HxWxD)	MC Centre Channel inches: 4.48 x 11.18 x 4.5 cm: 11.4 x 28.4 x 11.5
Weight:	MS Satellite 2.6 lbs. or 1.2 kg MC Centre Channel 4.85 lbs. or 2.2 kg
Color:	Silver or Silver/Black

MICRA 6 -

M225 POWERED SUBWOOFER

System Type:	Down Firing, Front Vented Bass Reflex Active Subwoofer
Power Output:	MOSFET power amplifier 225 Watt dynamic peak, 75 Watts RMS
Woofer:	8" (20.3cm) High Excursion Injection Molded Polypropylene Cone
Magnet Size:	20 oz.
Voice Coil Diameter:	1" (2.5cm)
Frequency Response:	30Hz-120Hz, +/-3dB
Inputs:	Low level RCA and High level inputs for flexibility with virtually any A/V receiver
Dimensions: (HxWxD)	inches: 16.65 x 9.41 x 14.17 cm.: 42.3 x 23.9 x 36
Weight:	22.0 lbs. or 10.0 kg
Color:	Black



FOR DEALER INQUIRIES

North America | API 3641 McNicoll Avenue, Toronto, Ontario, Canada M1X 1G5 • Tel: 416.321.1800

Australia | Audio Products Pty Ltd, Unit 6,61-67 O'Riordian S, Alexandria, Australia 2015 • Tel: +612 966 93477

Europe | API Europe BV Poppenbouwing 56, Geldermalsen, Netherlands, 4191 Nz • Tel: +31345588080

United Kingdom | API UK Ltd, Amorex Centre, Bury Road, Lavenham, Sudbury, Suffolk, England CO10 9QD • Tel: +441787249656

Defining Sound | www.athenaspeakers.com

PRINTED IN CANADA 3PAB011E